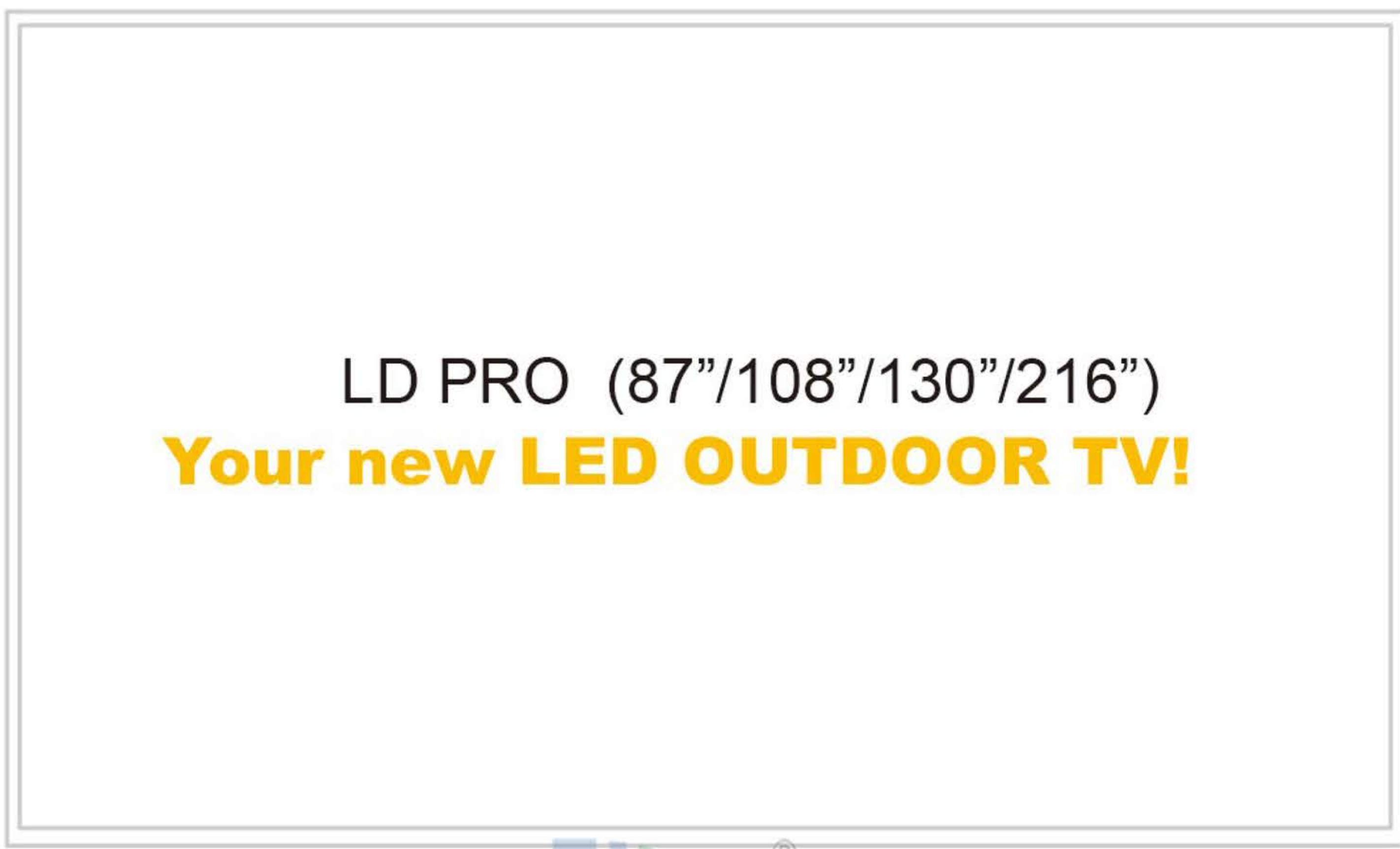


UNIFIED CONTROLLER:

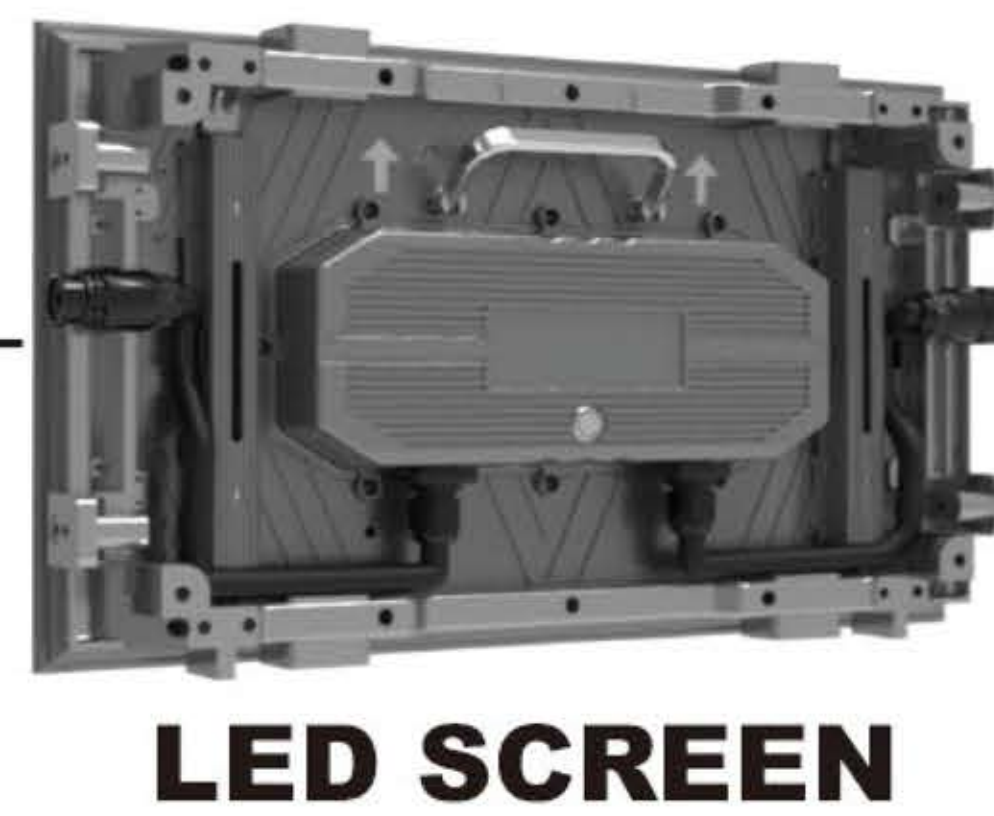
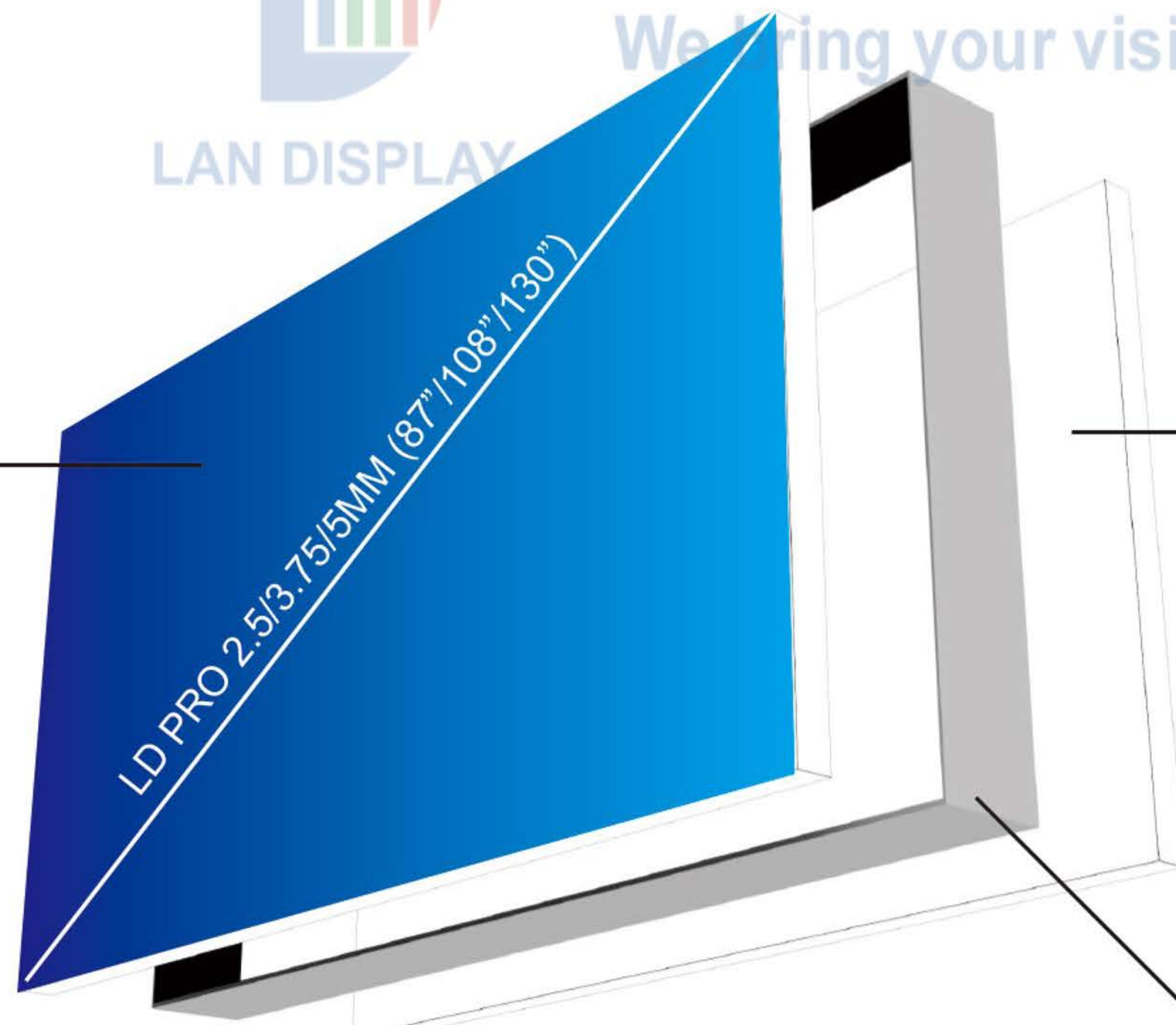
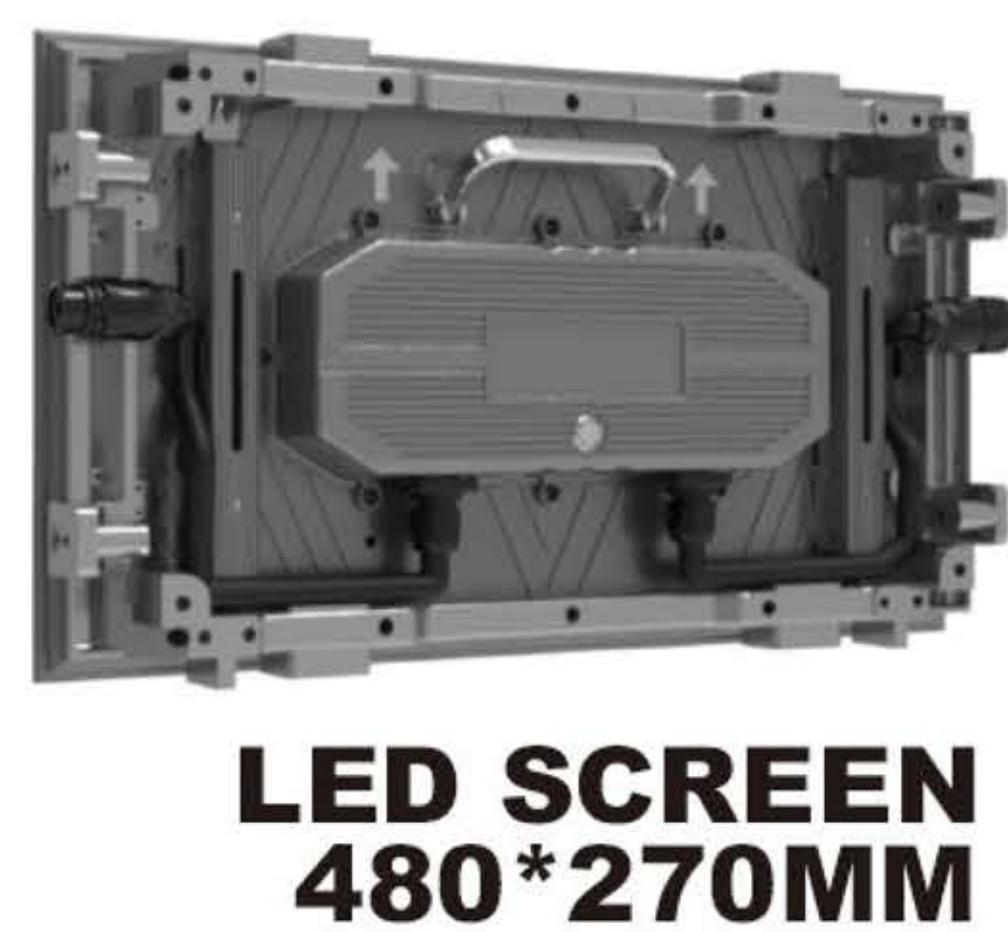
1. 4G and WiFi hotspot
2. Brightness sensor
3. Monitor
4. Speakers
5. And more



Unlimited Possibilities,
We bring your vision to life



Unlimited Possibilities,
We bring your vision to life



Frame
(DIY structure possible)



Unlimited Possibilities,
We bring your vision to life

SHENZHEN LAN DISPLAY PHOTOELECTRIC CO.,LTD

At LAN Display, we specialize in providing outdoor fine pixle pitch high-quality, customizable LED solutions for a variety of transit and retail applications. ‘ Our focus includes drive-thru menu boards(outdoor P0.9,P1.25,P1.5,P1.8), offering clear, dynamic displays for fast food restaurants; transit stop signs (outdoor P1.8,P2.5,P3.75), designed to enhance communication and visibility for public transport systems; bus shelters(outdoor P1.25,P1.8,P2.5), which offer shelter and real-time information through durable LED screens; and bus head signs(semi-outdoor P1.5,P1.8,P2.5), ensuring effective route information for passengers. Each of these solutions combines reliability, energy efficiency, and weather resistance, making them ideal for both outdoor advertising and public service communications, ultimately enhancing customer experience and operational efficiency.



Unlimited Possibilities,
We bring your vision to life



Shenzhen office



Email: Ben@lan-display.com



Contact: +8618681485066



Add: A Building,Longbig industrial area,Shiyan street,Bao'an,Shenzhen 518108



Unlimited Possibilities,
We bring your vision to life

OUTDOOR SMALL PIXEL PITCH LED DISPLAY (BEST VIEWING DISTANCE LESS THAN 1 METER)

- STATE-OF-THE-ART DIGITAL ADVERTISING
- PLAY TEXT, DYNAMIC IMAGES, AND VIDEOS
- FOCUS ON OUTDOOR PANELS
- CAN BE CUSTOMIZED



Unlimited Possibilities,
We bring your vision to life

CUSTOM LED SCREEN

GOOD AT EXCLUSIVE PRODUCT DESIGN

SHENZHEN LAN DISPLAY PHOTOELECTRIC CO.,LTD

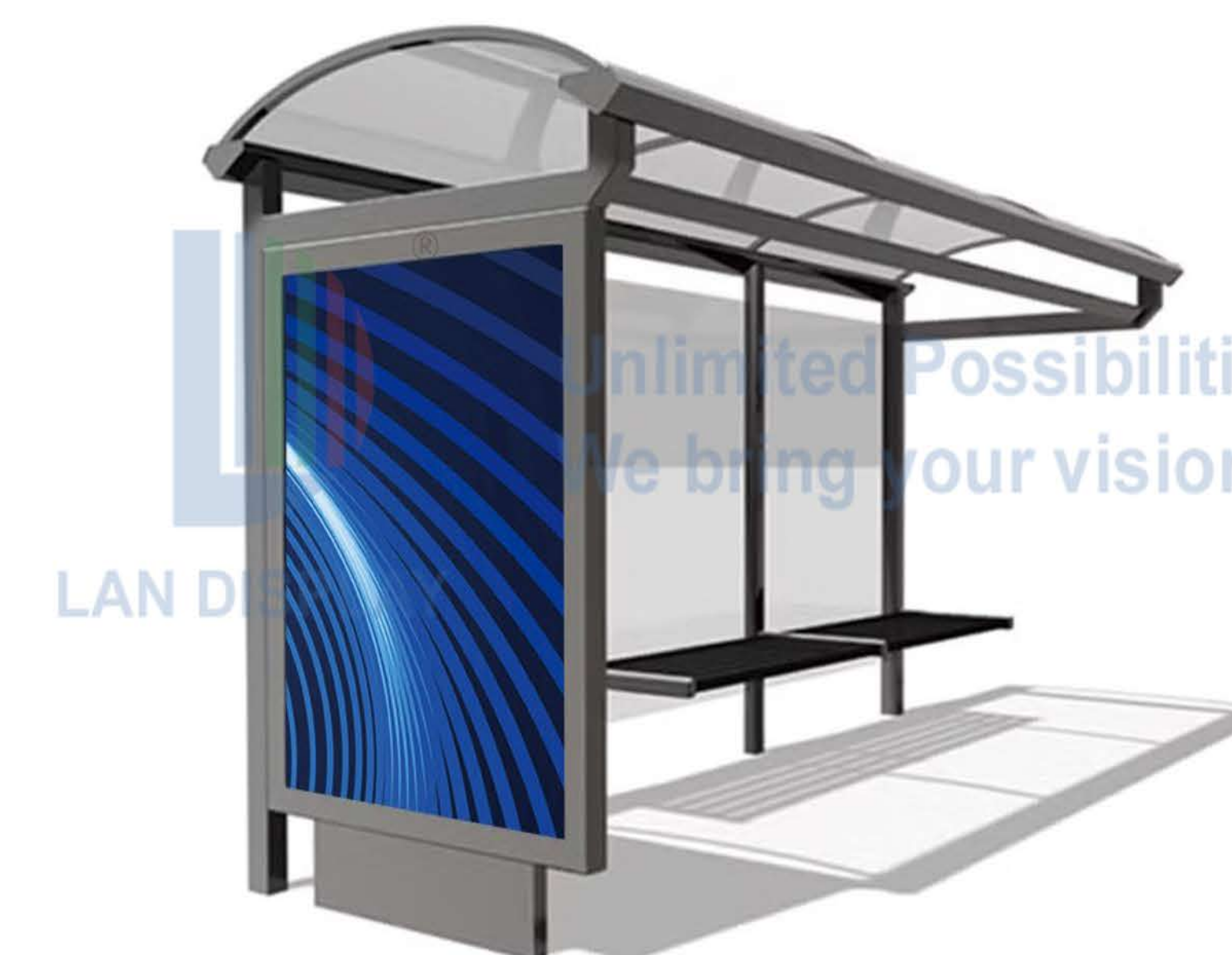
WWW.LAN-DISPLAY.COM



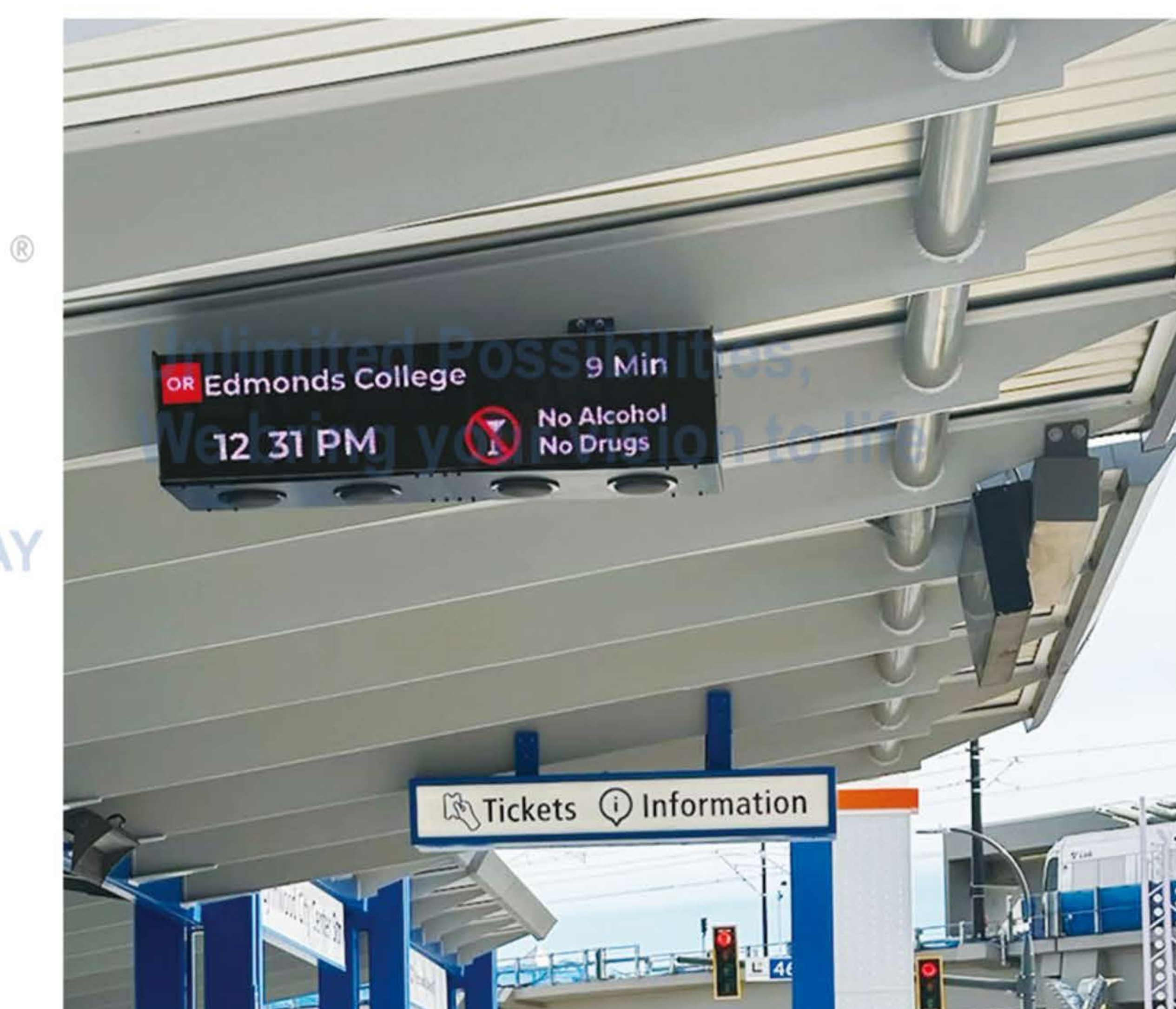
LED SIGN FOR DRIVE-THRU

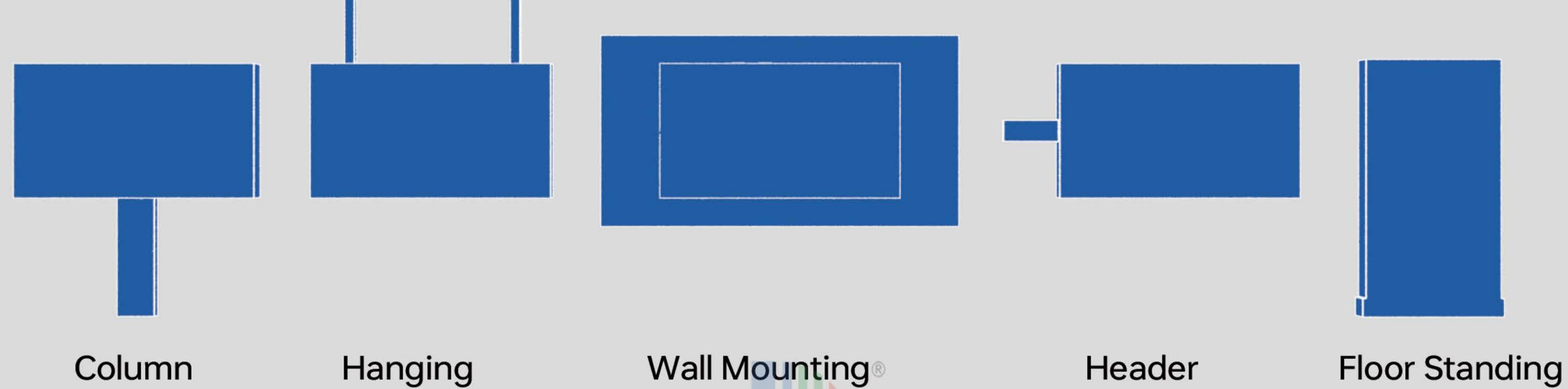


LED SIGN FOR BUS SHELTER



LED SIGN FOR TRANSIT

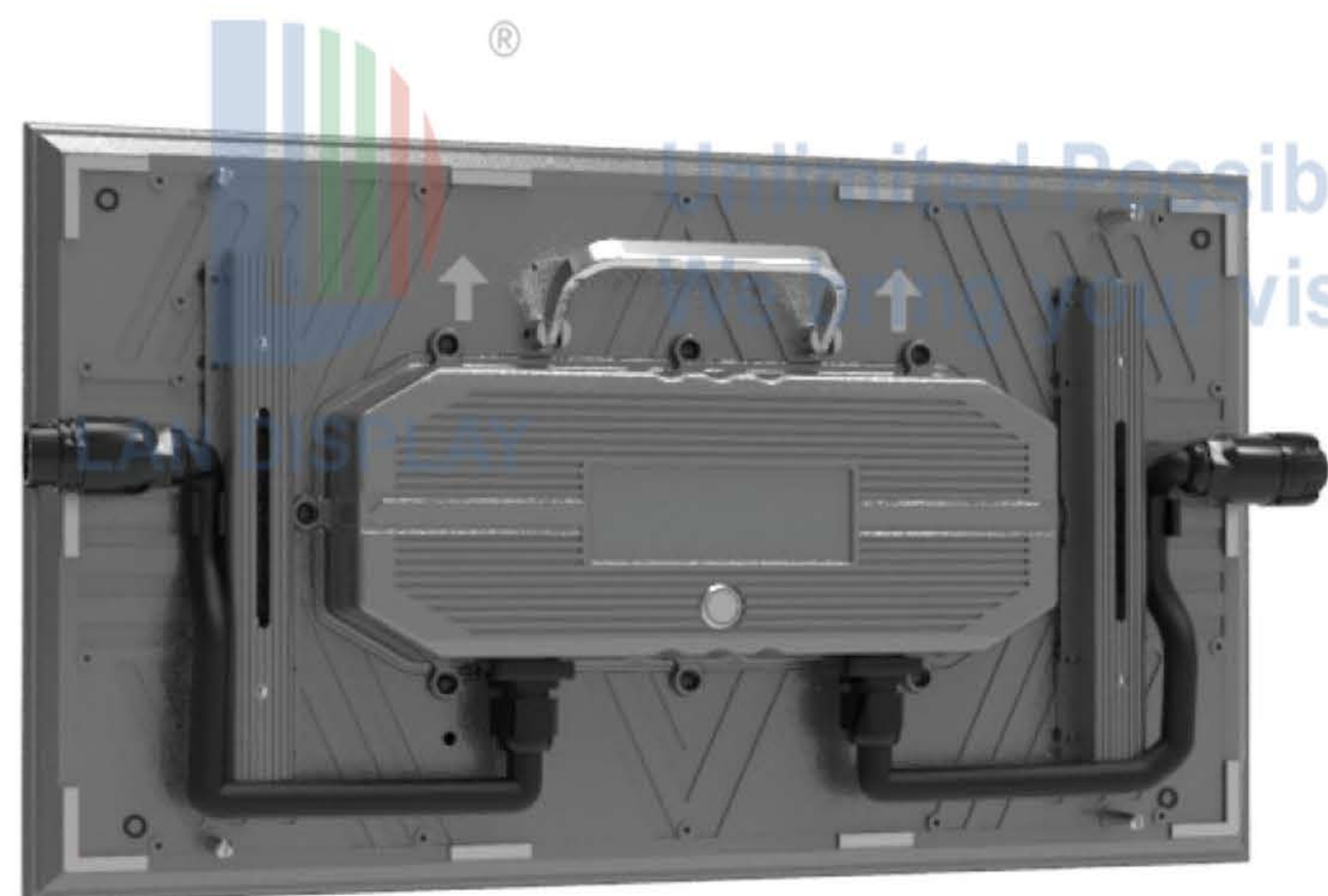




■ Diagram

ADVANTAGE IN HARDWARE

- 1.Push and lock installation way
- 2.Waterproof IP 68
- 3.Aluminum body better in heat spreading
- 4.Single wire connection
- 5.Pin to unlock for maintenance
- 6.Small simple cabinet.easy for single person to install

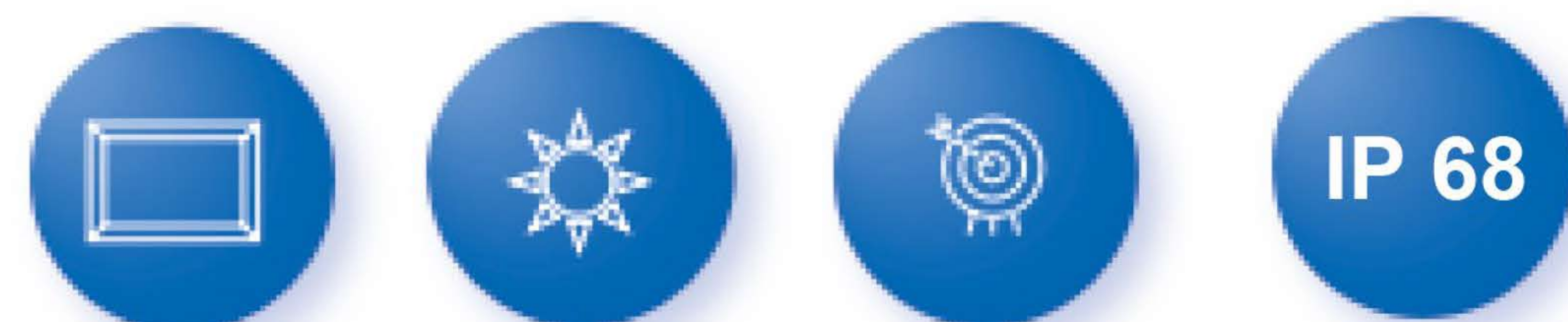
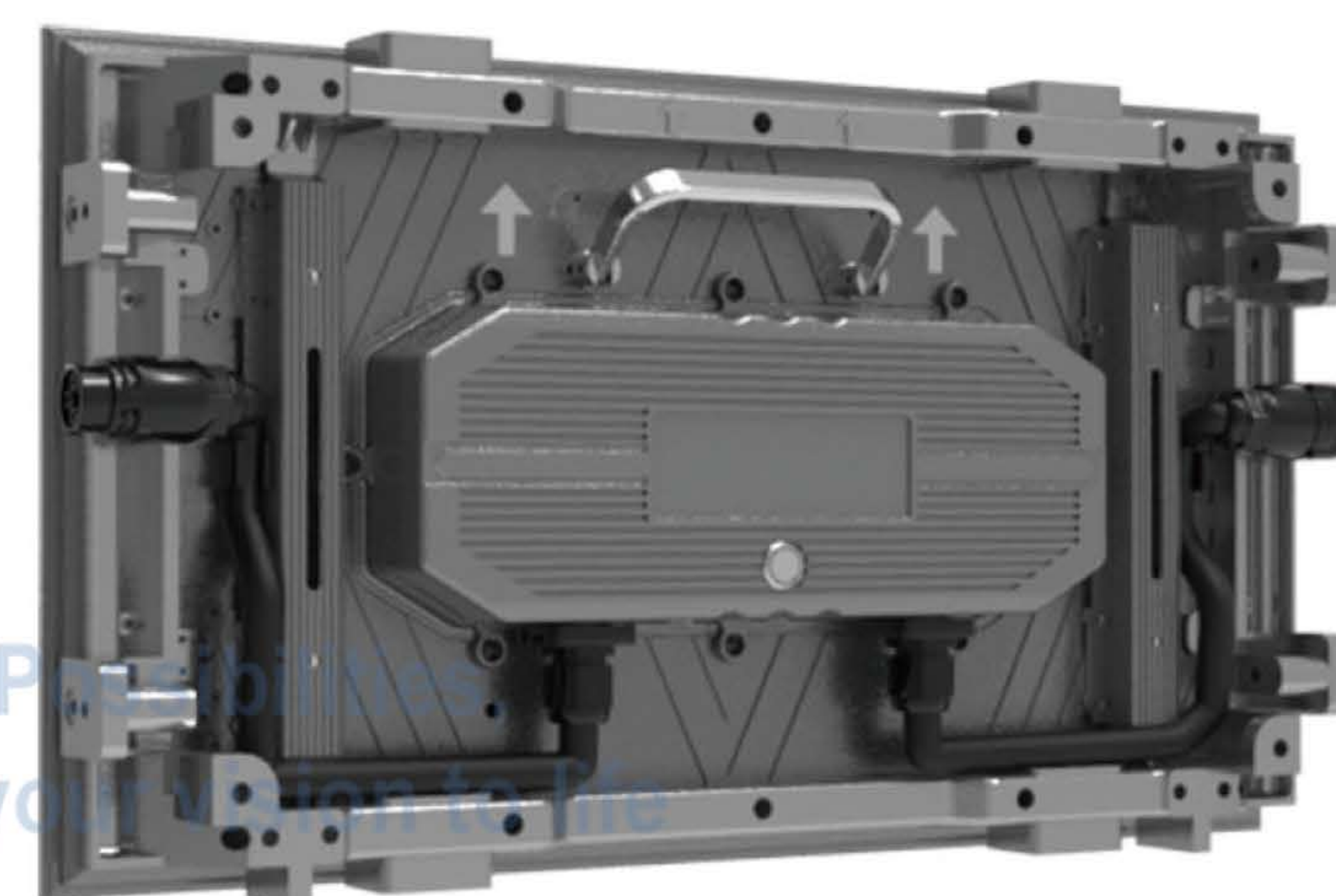


LED PANEL

SIZE: 480*270MM

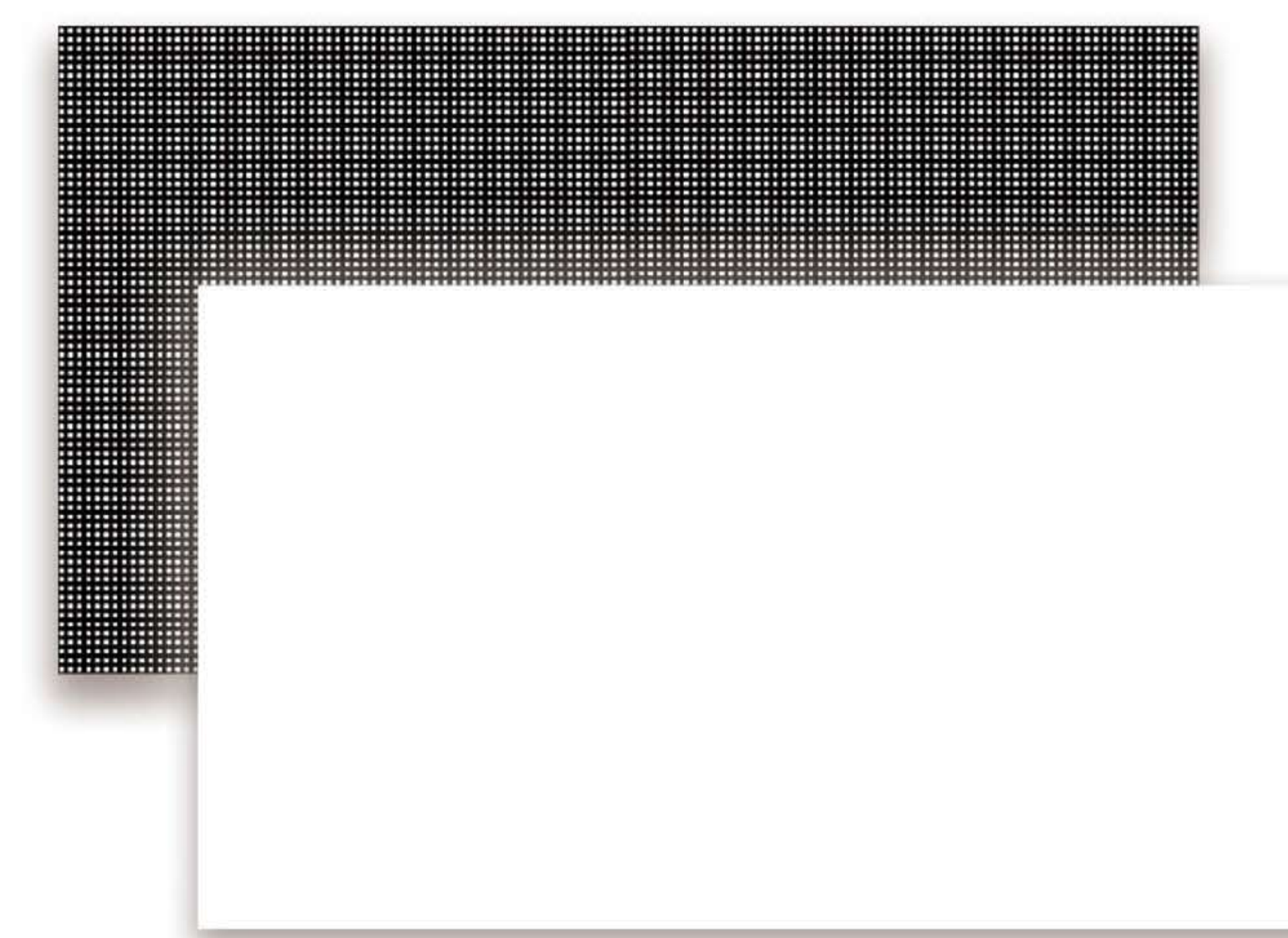
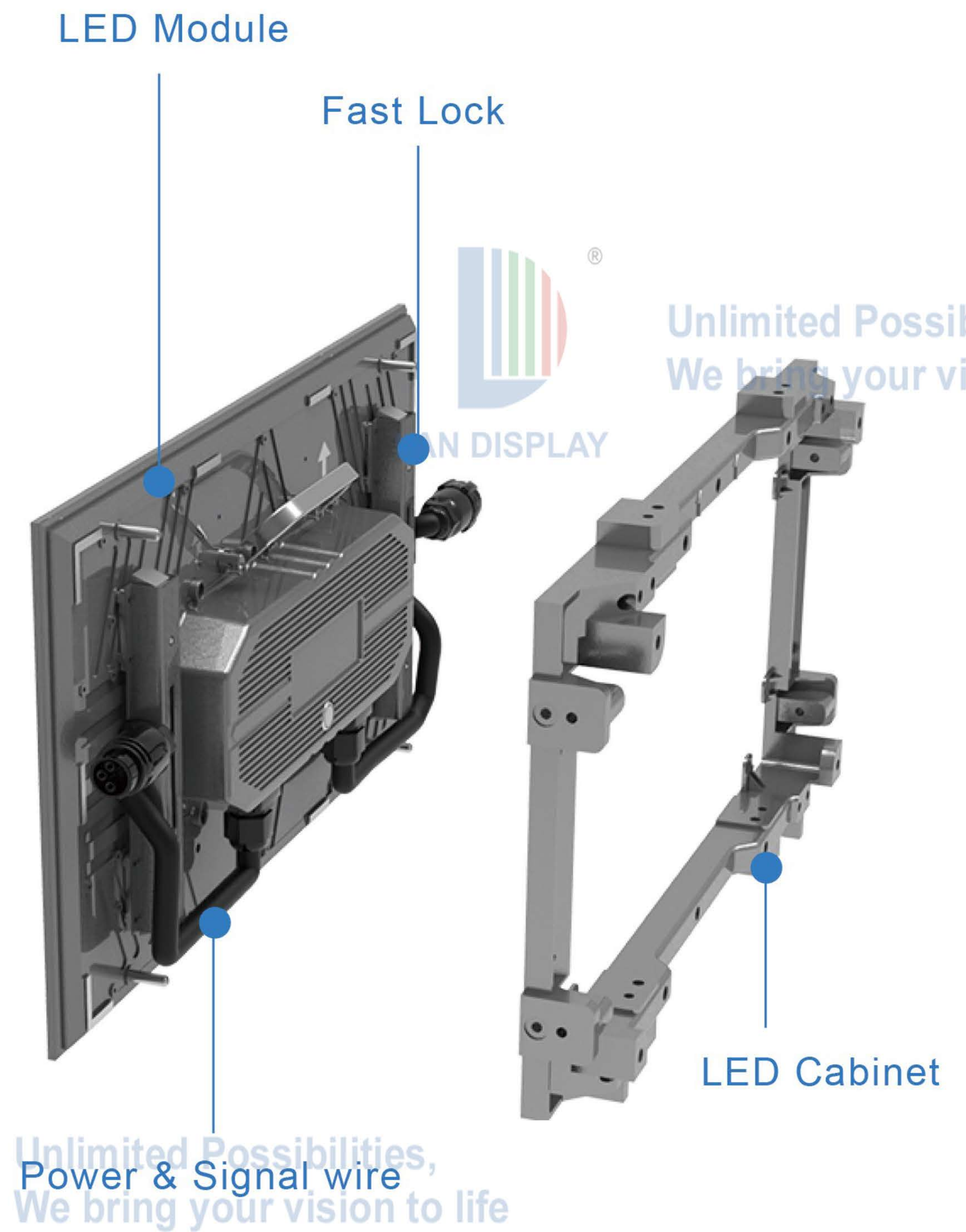
ADVANTAGE IN DISPLAYING

- 1.Single panel with 16:9 ratio
- 2.Brightness up to 8000nits
- 3.Lighting dots mark the holes for maintenance



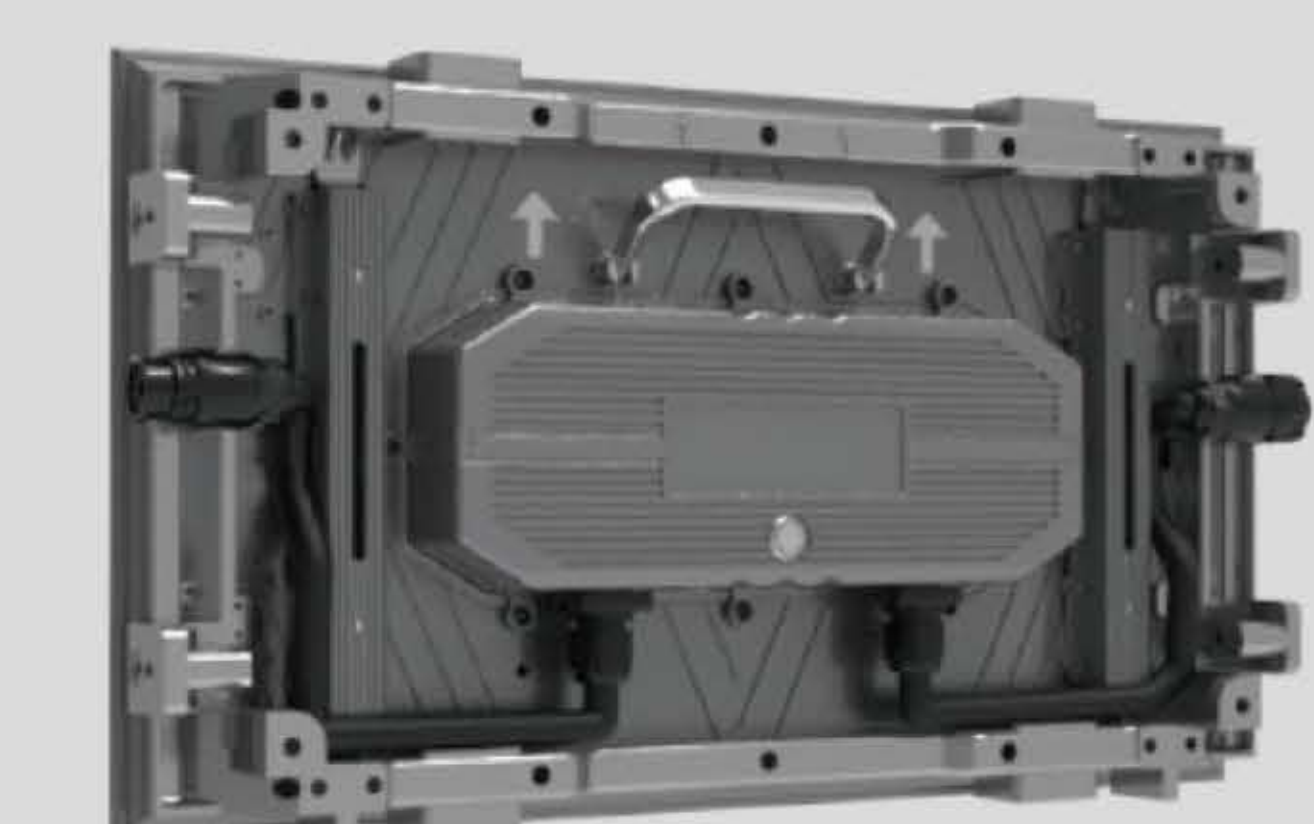
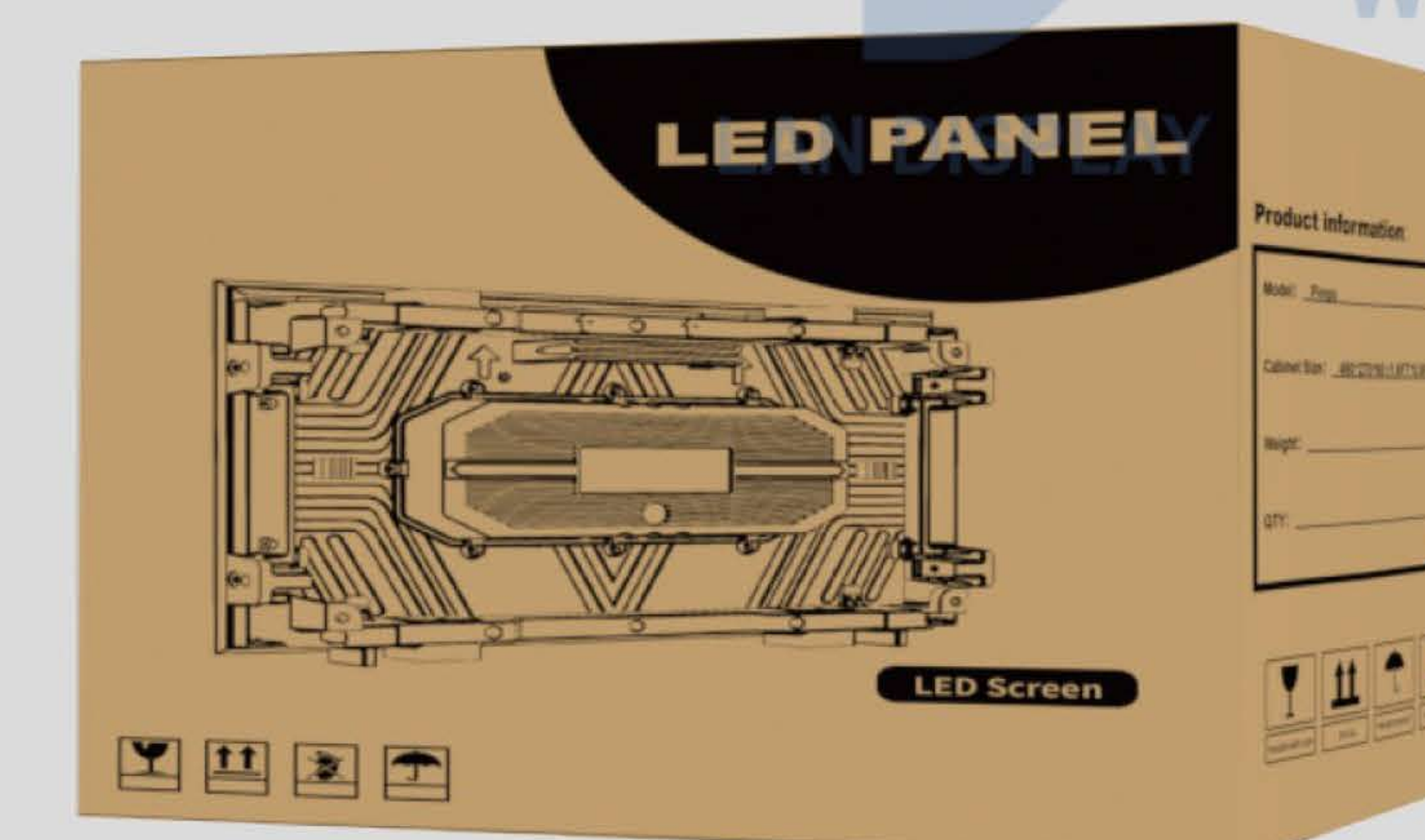
LED CABINET

Highlight: Quick installation



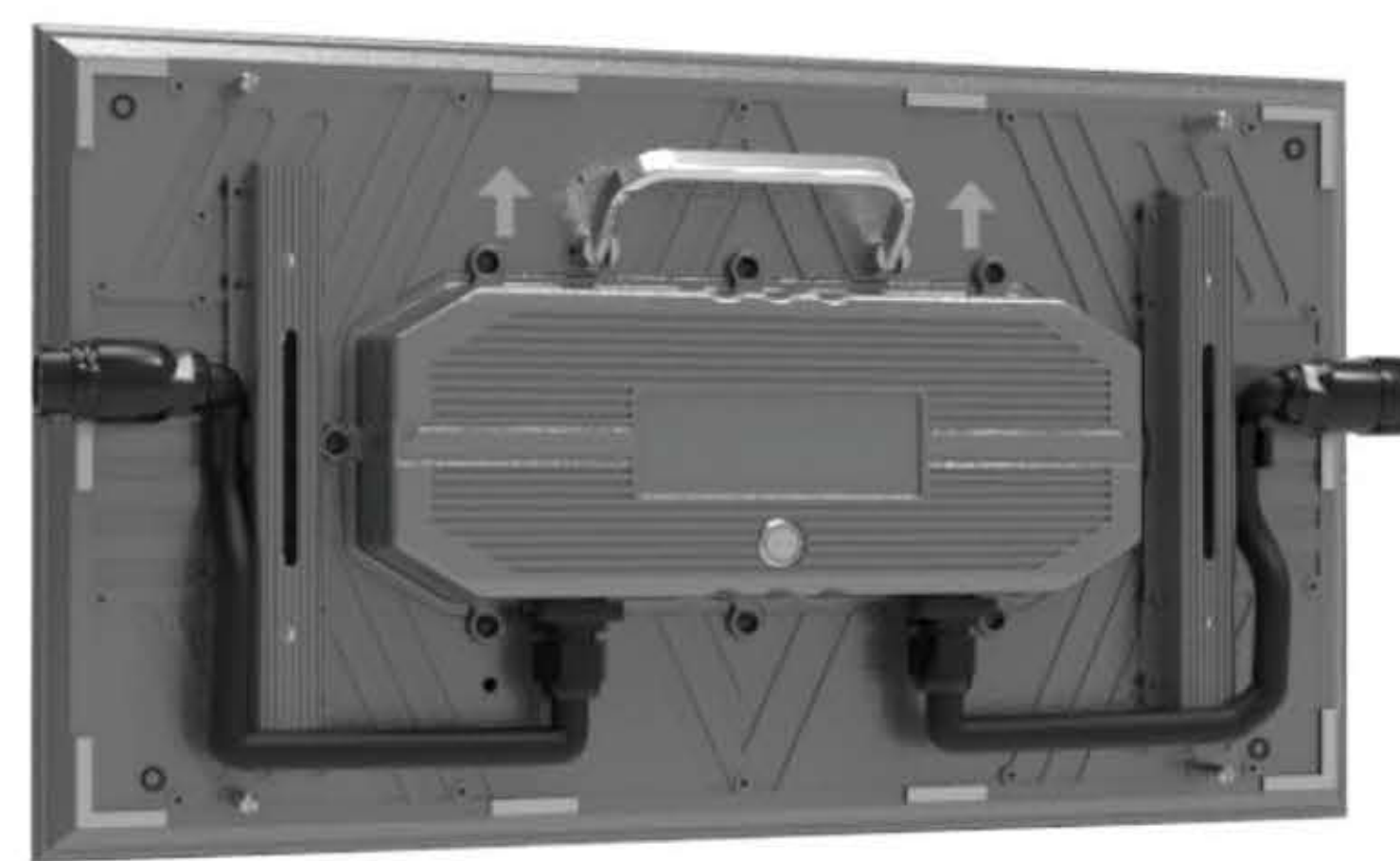
16:9 SIZE DESIGN

UP TO 10000 NITS BRIGHTNESS





USER MANUAL



a. LED PANEL



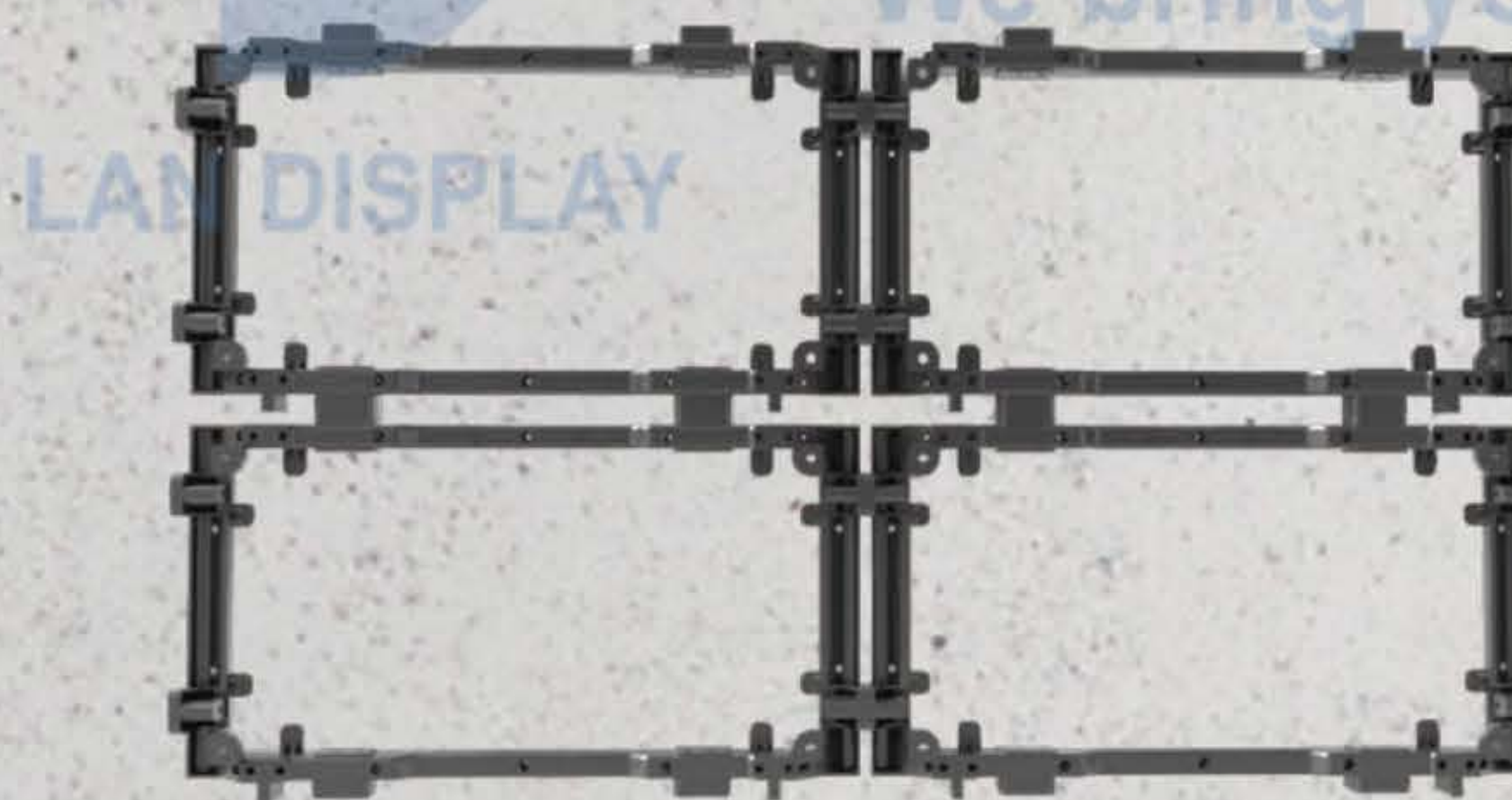
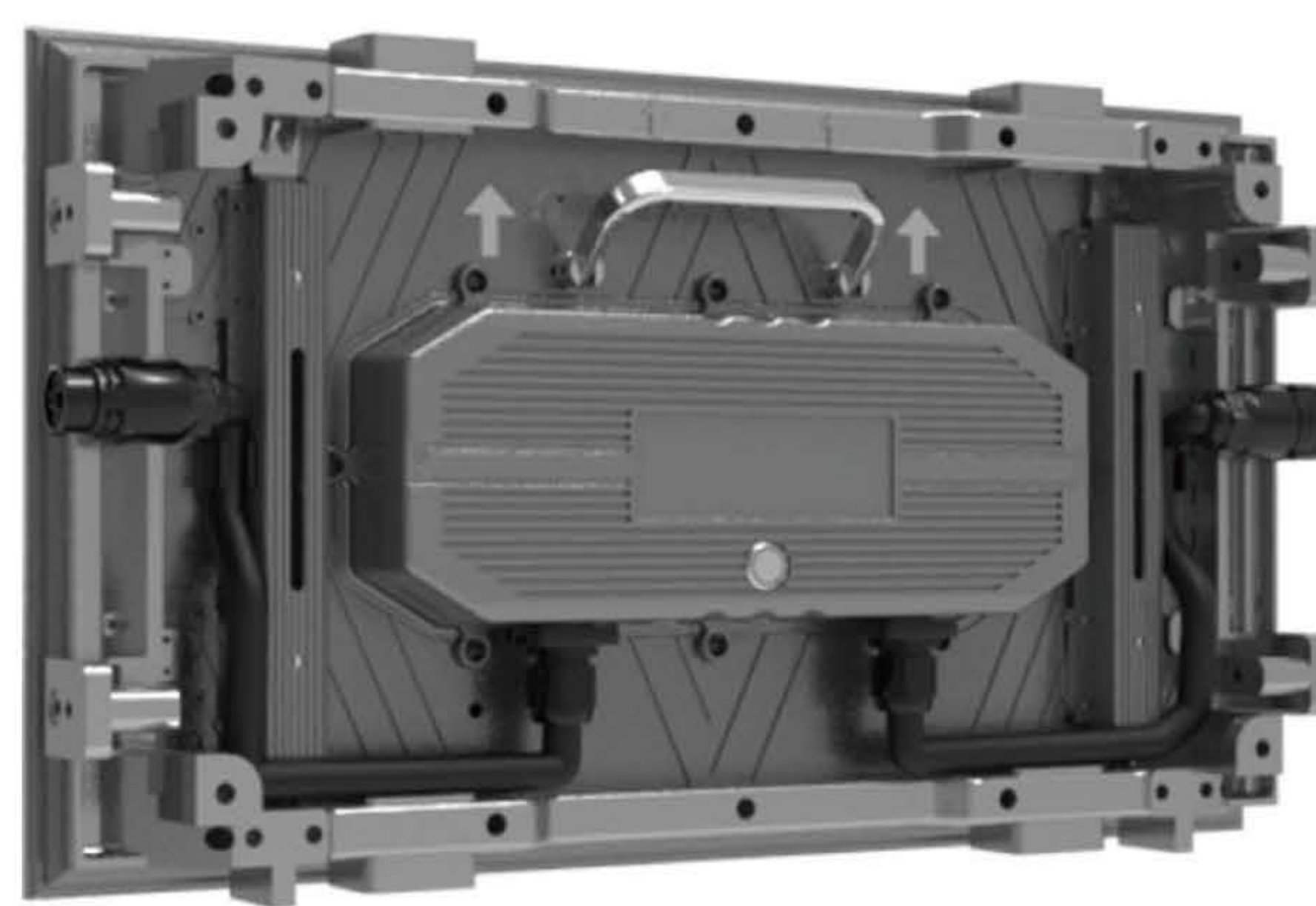
b. FRAME



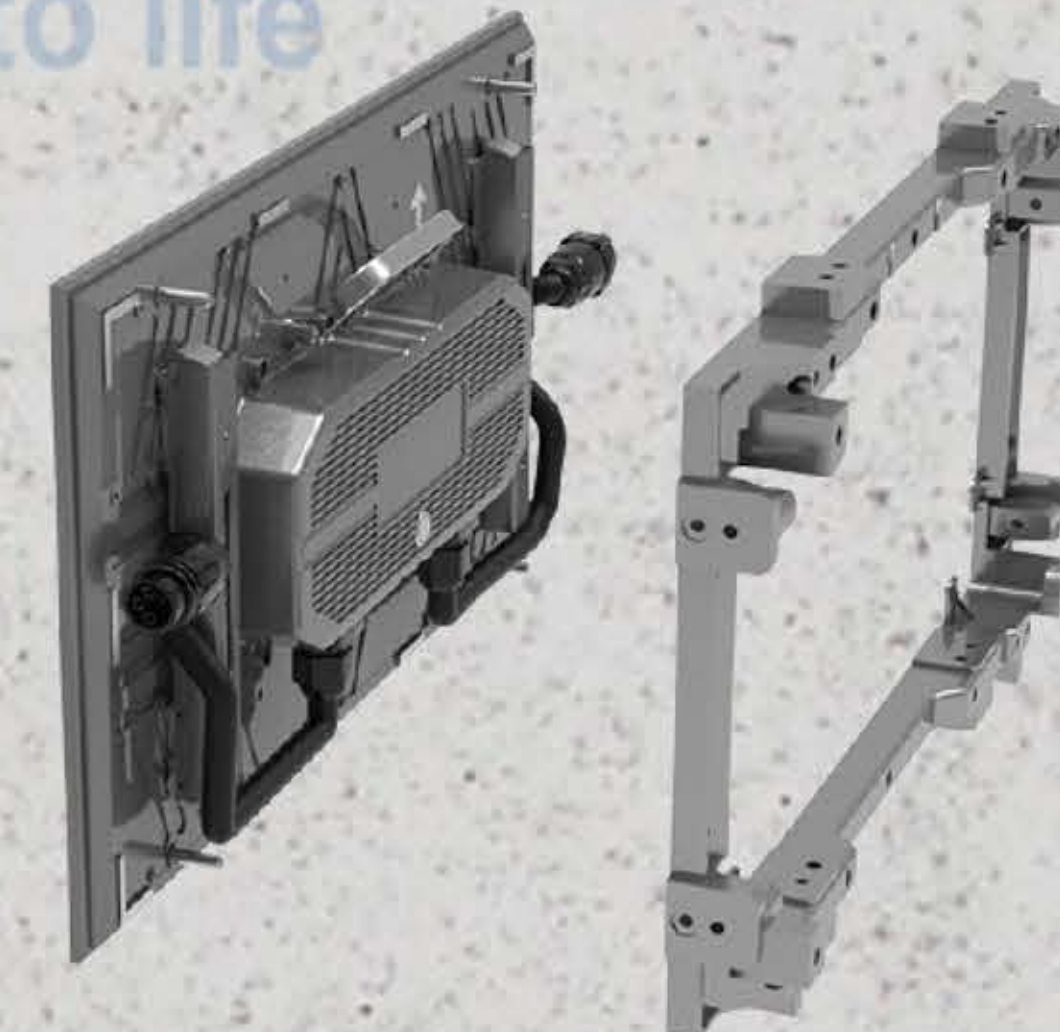
c. CONTROLLER

Unlimited Possibilities,
We bring your vision to life

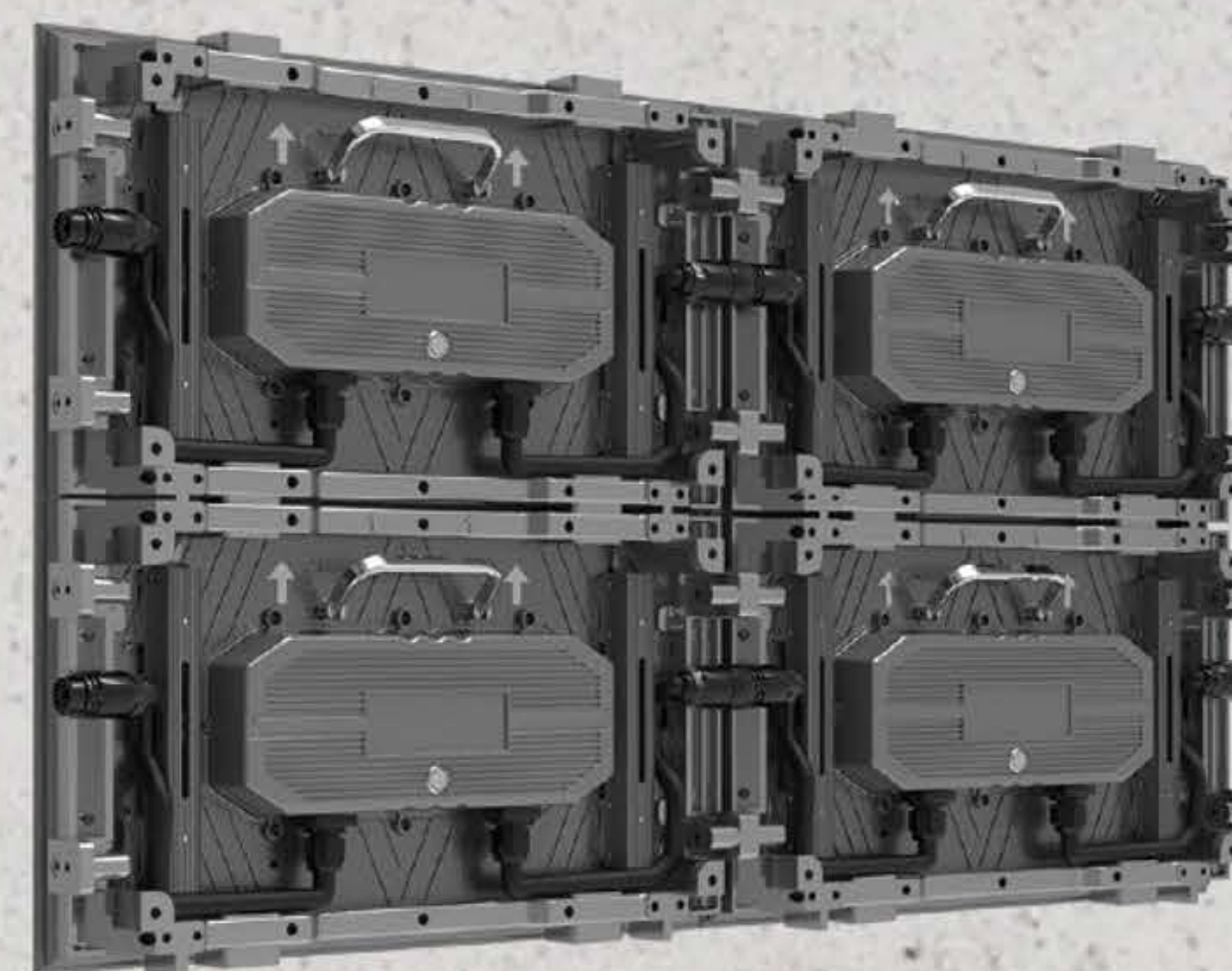
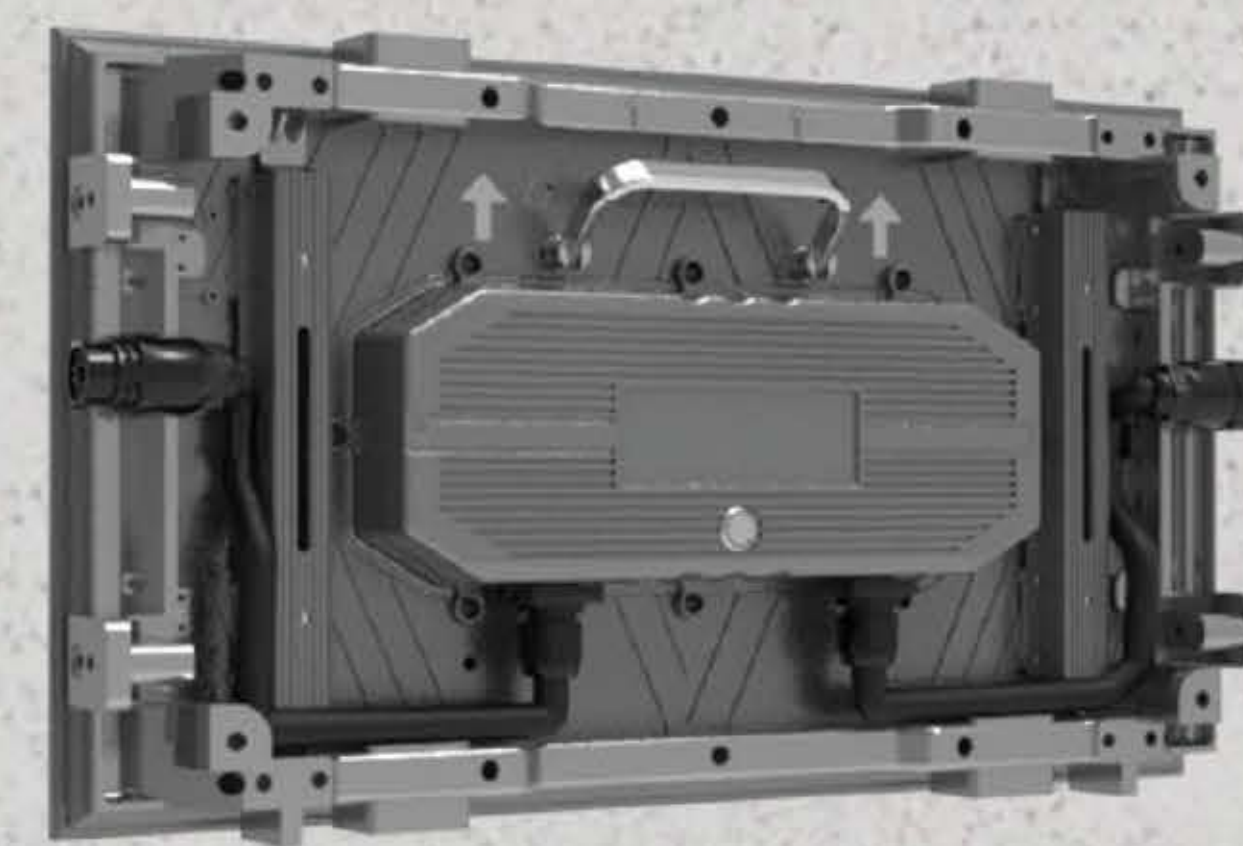
Outdoor Small Sign Specification(IP68)		Value	Value
Physical Specification	Product name	PRO 2.5	PRO3.75
	LED Type	SMD 3in1 1415	SMD 3in1 1921
	Pixel Pitch (mm)	2.5	3.75
	Panel Dimensions (W*H*D)/(mm)	480*270*50	480*270*50
	Pixel Per Panel	192*108	128*72
	Resolution ratio	16:9	16:9
	Panel Weight (kg)	3.8	3.8
	Panel Material	Aluminum	Aluminum
	Cabinet Dimensions (W*H)/(mm)	480*270	480*270
Optoelectronic Specification	Brightness (nit)	white led 8,000 /black led 5,000	white led 8,000 /black led 5,000
	Refresh Rate (Hz)	≥3840	≥3840
	Gray scale(Bit)	16	16
	Contrast Ratio	7500:1	7500:1
	Color Temperature (K)	7500	7500
	Viewing Angle (H/V) (°)	160/150	160/150
	Driving Type	1/18	1/9
	AC Operating Voltage (V)	100~240	100~240
	Power Consumption (Max./Avg.)(W/m²)	150/70	150/70
	Storage Temperature (°C)	-40~+60	-40~+60
Application Specification	Operating Temperature (°C)	-30~+50	-30~+50
	Storage Humidity (RH)	10%~90%	10%~90%
	Operating Humidity (RH)	10%~90%	10%~90%
	IP Rating (Front/Rear)	IP65/IP65	IP65/IP65
	Module Maintenance	Front	Front
	PSU & Others Maintenance	Front	Front
	Panel Installation Type	Fixed	Fixed



Step1: cabinets mounting



Step2: first panel to go



Step3: Join cable with the following panels



Step4: till the last panel



Step5: connect the controller

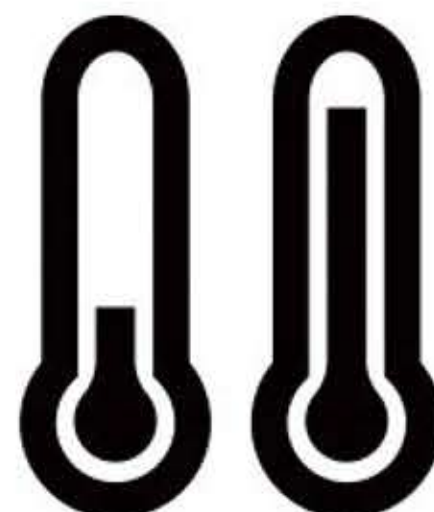
● WALL

LED OUTDOOR TV

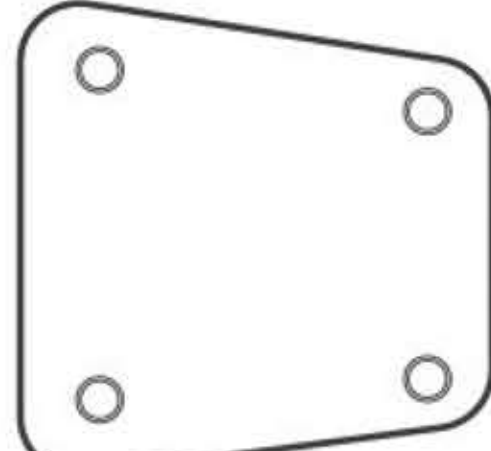
NEW INSTALLATION WAY,
MAKE YOUR OWN TV.

87" 108" 130" 216"

10000
nits



Operating
Temperature Range:
-22°F - 122°F
(-30°C - 50°C)



Maintenance
Front

Unlimited Possibilities,
We bring your vision to life

SUITABLE FOR

Commercial Outdoor Spaces

Residential Outdoor Spaces

Bespoke Projects



WEATHERPROOF
IP65



HIGH
BRIGHTNESS



AUTO BRIGHTNESS
CONTROL



COLOR
TEMPERATURE (K)



ANTI-GLARE
160/150(H/V)



AUDIO OUTPUT
X2 PCS

Unlimited Possibilities,
We bring your vision to life

16:9 Ratio Panel Can Make Real Outdoor TV



8*4ft
STANDARD

Possibilities,
our vision to life



16:9



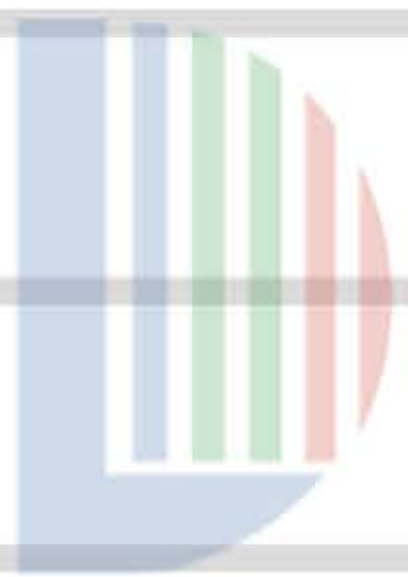
7.874*4.429ft
OUR PANEL

Unlimited Possibilities,
We bring your vision to life



Unlimited Possibilities,
We bring your vision to life

LAN DISPLAY



Unlimited Possibilities,
We bring your vision to life

LAN DISPLAY



Unlimited Possibilities,
We bring your vision to life

LAN DISPLAY

Outdoor Small Sign Specification(IP65)		Parameter	Parameter	Parameter
Physical Specification	Product name	PRO 0.9	PRO1.25	PRO1.8
	LED Type	SMD 3in1 1010	SMD 3in1 1010	SMD3in1 1010
	Pixel Pitch (mm)	0.9375	1.25	1.875
	Panel Dimensions (W*H*D)/(mm)	480*270*50	480*270*50	480*270*50
	Pixel Per Panel	512x288	375x216	256x144
	Resolution ratio	16:9	16:9	16:09
	Panel Weight (kg)	3.8	3.8	3.8
	Panel Material	Aluminum	Aluminum	Aluminum
	Cabinet Dimensions (W*H)/(mm)	480x270	480x270	480x270
Optoelectronic Specification	Brightness (nit)	4,500	4,500	4,500
	Refresh Rate (Hz)	≥3840	≥3840	≥3840
	Gray scale(Bit)	16	16	16
	Contrast Ratio	7500:1	7500:1	7500:1
	Color Temperature (K)	8,000	8,000	8,000
	Viewing Angle (H/V) (°)	180/180	180/180	180/180
	Driving Type	1/48	1/54	1/36
	AC Operating Voltage (V)	100~240	100~240	100~240
	Power Consumption (Max./Avg.)(W/m²)	150/70	150/70	150/70
	Storage Temperature (°C)	-40~+60	-40~+60	-40~+60
	Operating Temperature (°C)	-30~+50	-30~+50	-30~+50
Application Specification	Storage Humidity (RH)	10%~90%	10%~90%	10%~90%
	Operating Humidity (RH)	10%~90%	10%~90%	10%~90%
	IP Rating (Front/Rear)	IP65/IP64	IP65/IP64	IP65/IP64
	Module Maintenance	Front	Front	Front
	PSU & Others Maintenance	Front	Front	Front
	Panel Installation Type	Fixed	Fixed	Fixed